

DELTA	75.12
	75.12
00°00'	00.00
00°00'	00.00
00°00'	00.00
00°00'	00.00
00°00'	00.00
00°00'	00.00
00°00'	00.00
00°00'	00.00
00°00'	00.00
00°00'	00.00
00°00'	00.00
00°00'	00.00
00°00'	00.00
00°00'	00.00
00°00'	00.00
00°00'	00.00
00°00'	00.00
00°00'	00.00
00°00'	00.00

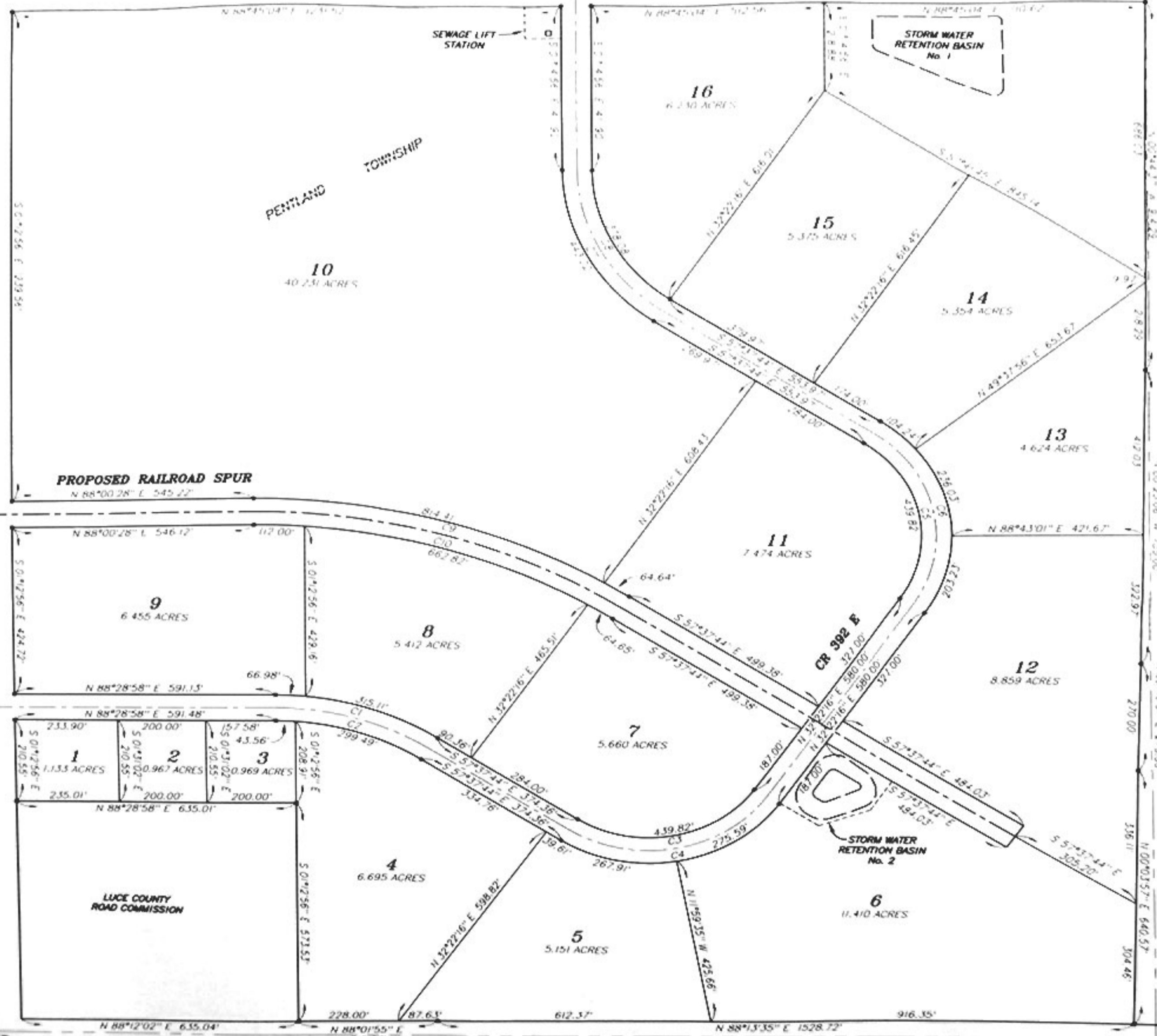
N. 74 COMMER
SECTION 6
T4N. 49W

McMILLAN TOWNSHIP

CR 428 E

PENTLAND TOWNSHIP

COUNTY ROAD 403



EXISTING RAILROAD SPUR

PROPOSED NEW RAILROAD SPUR

CR 392 W

PROPOSED RAILROAD SPUR
N 88°00'28" E 545.22'

CR 392 E

LUCE COUNTY ROAD COMMISSION

MILLER ROAD

N 88°28'54" E 2598.80'
COUNTY ROAD 457

CENTER SECTION SECTION 6